

BUSHEY Auctions

Catalogue £2

Catalogue

Auction of Fine Art, Antiques, Collectables,
Coins, Alcohol, Clocks, Watches, Jewellery & Silver



Lot 129

Thursday 11th September 2025

Auction starts at 11am

Live Online Bidding

Absentee and Telephone Bids accepted

No Public Attendance on Auction Day

Viewing by Appointment

4th to 10th September

Unit 9 Shakespeare Industrial Estate, Watford. WD24 5RR

www.busheyauctions.com

**BID LIVE ONLINE FOR £3
PER AUCTION**
easyliveAuction**.com**

the-saleroom.com

BUSHEY Auctions

Welcome to Bushey Auctions

We hope you will have an enjoyable time bidding for the fantastic array of antiques, fine art, collectables, jewellery, silver etc from private collections. Please remember when placing your bid, the Buyers premium is 20% + VAT on top of the hammer price.

Please note that any lots purchased via online bidding portals will be subject to an additional commission charge imposed on the hammer price in addition to our basic Buyers Premium.

Please see the individual sites for rates of commission.

Bushey Auctions hold monthly auctions and valuation days; please see the back of the catalogue for forthcoming dates. We are happy to make personal appointments to view items for submission into future sales. We also offer probate and insurance valuations. Our team is always available to help, please don't hesitate to ask any of the team if you need assistance. The information below will help you enjoy the event; it sets out how the auction works.

CONDITIONS OF SALE

VIEWING (BY APPOINTMENT ONLY for 7 days before auction date)

The catalogue contains a Lot no, Description and Estimate for each lot. The description is for guidance only and as some items are of an age or nature that means they may not be in perfect condition, we advise you to examine the lots yourself before the auction starts. Please take care when handling items, all breakages and damage will be charged for. Viewing times are shown on the front of the catalogue. All items are offered for sale as viewed and are sold as seen. The Auctioneer does not take responsibility for authenticity, origin or estimated price. All items are sold without any warranty or claim as to its suitability or fitness for its apparent purpose so as a prospective Buyer, you should use your judgement. The wording A/F within the description is an indication that the lot may not be in good condition. All electrical items are sold on the express condition that the winner ensures they are examined by a competent electrician before connecting them to any source of electricity.

Condition Reports will be supplied until 4 p.m. the day before auction day.

All sales are final and no refunds are given.

RESERVE PRICES

Some items have a reserve price. Where necessary, the Auctioneer will protect the reserve on an item and use his discretion up to 10%. If this price is not reached, the Auctioneer will record the item as unsold and move on to the next item.

THE BUYER

The highest bidder as determined by the Auctioneer is the Buyer. The Auctioneer has absolute discretion to settle any dispute that may arise and to refuse bids or to advance the bidding as seen fit. His decision is final. These terms and conditions also apply to after-sale bids, timed auction bids and private treaty sales.

In cases of dispute these Conditions of Sale are governed by UK jurisdiction under English Law.

THE BUYER'S PREMIUM

This is the commission paid to the auctioneer by the Buyer over and above the highest bid value (often referred to as the Hammer Price) of each item. **OUR BUYER'S PREMIUM IS 20% + VAT (total 24%). So if you are the highest bidder on an item with a £100 bid, the total cost to you is £124. Please take this into account when bidding.**

Please see the individual sites for rates of commission.

Please note that any lots purchased via online bidding portals will be subject to an additional commission charge imposed on the hammer price in addition to our basic Buyers Premium. Certain works by living artists or artists deceased within the last 70 years will incur an Artist's Resale Right royalty charge when sold with a hammer price of £1000 or more.

ONLINE BIDDING

We offer online bidding services via www.easyliveauction.com and www.the-saleroom.com

Please note that any lots purchased via online bidding portals will be subject to an additional commission charge imposed on the hammer price in addition to our basic Buyers Premium.

Please see the individual sites for rates of commission.

Payment must be made within 48 hours, by debit card or bank transfer, collection is by appointment only from our Watford showroom. Unless by prior arrangement, storage charges of £5 per item per day will be incurred thereafter. If payment is not received a week after the auction date, the bidder's account will be blocked on all internet bidding sites (the comments are available to all auctioneers).

PAYMENT

You are welcome to pay by cash, cheque, electronic bank transfer or debit card. Credit cards will only be accepted up to the value of £500. A 3% surcharge will apply to Business debit/credit cards and International debit/credit cards. We reserve the right to hold items paid for by cheque until the cheque has cleared.

Please note, once the Auctioneer has determined yours to be the winning bid, a legal contract is created and you are responsible for and obliged to pay for the item(s). If full payment is not received within two weeks after the auction date Bushey Auctions reserve the right to hand the bidder's account over to our debt collection agency. In the event your account is passed for recovery please be advised you will be responsible for all additional costs which will include but not limited to debt recovery costs, legal costs, interest and storage charges. This will affect your bidder status at Bushey Auctions and any other auction houses as well as internet bidding sites and should the matter proceed through the courts this may affect your credit status. Bushey Auctions reserve the right to cancel the sale and re-sell the item(s) won and can also proceed against the Buyer for breach of contract. Any deposits or part payments shall be forfeited and the defaulter shall make good any loss arising from the resale, together with the charges and expenses in respect to both sales. So please only bid up to the amount you are prepared to pay and make sure you allow for the Buyer's Premium and VAT

Items that have been paid for not collected 3 months after the auction date will be sold by Bushey Auctions, the proceeds to defray storage charges.

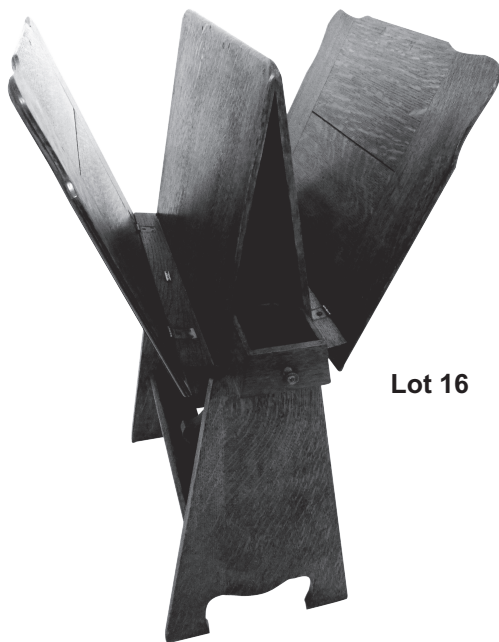
IF YOU CAN'T MAKE THE AUCTION, WE CAN BID FOR YOU

If you would like to bid for an item, we are happy to bid on your behalf. Please request a form by email or complete the Absentee/Commission bidding form found on our website stating the maximum you are prepared to bid (minimum bid £20). You can also bid over the telephone for lots estimated over £50. The form to book a telephone line is also found on our website.

All forms must be received by 4 p.m. the day before auction day. Please note that acceptance is not guaranteed. We require debit or credit card details for all absentee/commission/telephone bids as security for your bid and may require a deposit of 50% of your maximum bid. We will then bid for you up to your maximum, attempting to secure the item at the lowest required to beat all other bids. We will contact you if you are the winning bidder for the lot(s) and will arrange payment and collection with you. Payment must be made within 48 hours and we reserve the right to charge the card given in full payment including all fees. Unless by prior arrangement, storage charges of £5 per item per day will be incurred thereafter.

Lot No.	Description	Estimate
Furniture, Carpets, Mirrors & Lighting		
1	A Victorian bow fronted chest of drawers with brass handles and painted decoration to the three graduated drawers, all on four bracket feet, 84.5 x 94 x 57cm	£100-£150
2	An early 20th century rectangular roll top oak desk with seven drawers to the base with wooden handles, the top section with six drawers, 102 x 121 x 68cm	£100-£150
3	A reproduction pedestal desk with leather tooled inlay top, ten drawers with brass swing handles all on bracket feet, 79.5 x 122 x 60cm	£30-£50
4	A Victorian rectangular games table on a tapered stem and platform base with bun feet, the hinged top opening to reveal a green baize, closed 74 x 91.5 x 45cm	£100-£150
5	Disque Cabinets patent no. 25251 circa 1910 rectangular mahogany record cabinet, 94 x 47 x 46cm	£40-£60
6	A late 19th century mahogany oval occasional table on four baluster legs with ball and claw feet, 73 x 83 x 55cm	£30-£50
7	A mahogany fretwork butlers tray on X shaped base with pierced gallery top, 85 x 83 x 41.5cm	£60-£90
8	A mahogany wine table on twisted stem and three outswept legs, 73.5 cm (h)	£40-£60
9	A mahogany wine table with square top on knopped cylindrical base with outswept legs, 67cm (h)	£40-£60
10	A mahogany plant stand on four barley twist supports, 77.5 x 33 x 31cm	£40-£60
11	A marble top gallery occasional table of trefoil form with pierced gallery top on three outswept cylindrical legs, 81 x 47 x 45cm	£40-£60
12	A French shaped rectangular gilt metal and pink marble console table with scroll pierced and shell border on leaf shaped scroll supports, 84 x 94 x 33.5cm	£100-£150
13	Victorian ebonised tilt-top pedestal table, the circular top inlaid with Mother of Pearl and painted with flowers and a parrot, 66.5 x 51cm	£80-£120
14	An Art Deco octagonal side table on bracket supports, 61 x 60 x 59.5cm	£30-£50
15	An Art Deco octagonal side table with two shelves on bracket feet, 57.5 x 51 x 50cm	£30-£50

Lot No.	Description	Estimate
16	An oak Arts and Crafts magazine rack with hinged side panels on an A-frame base, 77 x 41 x 45cm	£40-£60
17	A cylindrical wooden banded umbrella and stick stand with metal lining and lion mask side handles, 65 x 30cm	£40-£60
18	An upholstered boudoir couch in the classical style on carved wooden base with brass feet, 59.5 x 148 x 46cm	£80-£120
19	A Regency mahogany and rattan occasional elbow chair on tapering cylindrical legs to include a detachable cushion	£40-£60
20	A pair of Middle Eastern wool carpets, cream ground with repeating floral design and border, each 156 x 93cm	£100-£150
21	A rectangular silver plated bevelled edge wall mirror with applied floral embossed corners, 56 x 71cm	£80-£120
22	An Arts and Crafts hand hammered rectangular wall mirror with original plate, 66 x 97cm	£50-£80
23	An Arts and Crafts oval hand hammered wall mirror with shield motifs, 50 x 84cm	£60-£90
24	A rounded rectangular gilt metal wall mirror, chased with leaves and berries surmounted by pierced ribbon work to the arched top, 88 x 45cm	£40-£60



Lot 16

Lot No.	Description	Estimate
25	A gilt metal Rococo style early 20th century wall mirror, 63 x 54.5cm	£30-£50
26	An early 20th century oval gilded wooden wall mirror, 94 x 56cm	£50-£80
27	A gilded wooden oval wall mirror, 51 x 67cm	£40-£60
28	A mid 20th century gilded wooden circular convex mirror, 31.5cm (d)	£30-£50
29	A 19th century fretwork rectangular wall mirror, gilt surround to plate, surmounted with a gilt ho-ho bird, 95 x 54cm	£80-£120
30	Three mid 20th century light fittings to include a Guzzini orange acrylic pendant lamp Big Bud 2223 by Studio 6G 25x 33cm	£200-£300
31	An Art Deco circular frosted glass ceiling lamp embossed with flowers and leaves, 35cm (d)	£40-£60
32	A French Art Deco wrought iron and amethyst glass table lamp, lamp shade signed Rethonde, 70cm (h)	£150-£200
33	An Art Deco French spelter table lamp in the form of a lady holding a ball on raised circular marble base, attributed to Balleste, 51cm (h)	£150-£200
34	An Art Deco style table lamp with chrome hexagonal base and frosted glass shaped shade, 48cm (h)	£30-£50



Lot 33

Lot No.	Description	Estimate
35	A pair of Elkington silver plated lampstands in the form of fluted rectangular columns on rounded square bases with beaded borders, 44.5cm (h)	£60-£90
36	An Art Deco metal desk lamp of rectangular form on curved metal mount, 34cm	£40-£60
37	A brass bankers lamp of customary form on raised rectangular base, 26 x 20.5 x 15cm	£30-£50
38	An oriental ceramic figurine of a seated warrior on raised square bronzed lamp stand base , 53 x 27 x 24cm	£40-£60
39	Jonathan Cox Studio pottery table lamp titled Iris, signed to the base, 36cm (h)	£50-£80
40	Jonathan Cox Studio pottery table lamp titled Wild Rose, signed to the base, 36cm (h)	£50-£80
41	Jonathan Cox Studio pottery table lamp titled Summer Meadow, signed to the base, 36cm (h)	£50-£80
42	Jonathan Cox Studio pottery table lamp titled Iris, signed to the base, 31.5cm (h)	£50-£80

Fine Art

43	A framed polychromatic print of the Battle of Gwanga Cape of Good Hope 1846, 50 x 64cm	£40-£60
44	Medici Society Ltd framed and glazed polychromatic print no. 1927 Flemish 38 Head of Girl after the painting by Jan Vermeer, labels to verso, 46.5 x 39.5cm	£40-£60
45	Six Hiroshige framed and glazed polychromatic woodcut prints of Japanese landscapes, each 24.5 x 36.5cm	£120-£180
46	Two Hiroshige framed and glazed polychromatic woodcut prints of Japanese landscapes to include a book by the artist, each 22.5 x 33.5cm	£50-£80
47	Robert W. Milliken framed and glazed watercolour of birds in flight, signed bottom right, 53 x 73cm	£50-£80
48	A framed and glazed watercolour of a bridge and buildings by a river indistinctly signed bottom right, 30 x 56cm	£40-£60

Lot No.	Description	Estimate
49	Marjorie Best framed and glazed watercolour still life of flowers, 46.5 x 34cm	£70-£100
50	Marjorie Best framed and glazed watercolour still life of flowers, 34.5 x 44.5cm	£30-£50
51	Diane Taylor framed and glazed watercolour titled The Breakfast Table (after George Clausen) signed bottom left, dated 1992, 44.5 x 44cm	£30-£50
52	Diane Taylor framed and glazed watercolour titled Chinese Schoolgirls, signed bottom right, dated 1992, 46.5 x 39cm	£30-£50
53	Marc Poisson framed and glazed pastel of Cape Dutch Cottages, signed bottom left, 46.5 x 62cm	£50-£80
54	A pair of 19th century framed oval painted porcelain panels of ladies in 18th century dress, frames 20 x 17.5cm images 9.5 x 8.5cm	£100-£150
55	Wilson Bigaud (Haitian 1931-2010) framed oil on board of a vibrant market scene, signed lower right, Naders Art Galleries Haiti label to verso, 60 x 60cm	£300-£500
56	Sophie Strouve oil on canvas of a street circus, signed bottom left, 63 x 98cm	£100-£150
57	Louis Latapie framed oil on board of an expressionist portrait, signed bottom left, 55 x 38cm	£300-£500
58	Laurie Tayler framed oil on canvas of a group of musicians, signed bottom left, 54.5 x 72cm	£60-£90
59	Laurie Tayler framed oil on board of a crowd scene circa 1960, signed bottom left, 48.5 x 58.5cm	£100-£150
60	Marjorie Hawke framed oil on board of a Cotswold Village, signed bottom right, label to verso, 48.5 x 58.5cm	£40-£60
61	Raymond Rogers framed oil on canvas landscape with a bridge over a lake, signed bottom left, 74.5 x 89cm	£200-£300
62	Dimitri Obozenko framed oil on canvas titled At The Ball, signed bottom right, 57 x 60cm, details to verso	£220-£320
63	A framed oil on board of two boys wearing tallit katan, indistinctly signed bottom right, 50 x 40cm	£60-£90
64	A 19th century South American school framed oil on canvas of a gaucho mounted on a mule with two sheepdogs rounding up a flock of sheep, 36 x 58cm	£200-£300

Lot No.	Description	Estimate
65	A 19th century continental school framed oil on canvas of a punt on a river with a castle in the background, 50 x 58cm	£200-£300
66	G. Williams framed oil on canvas of horses pulling a cart carrying logs, indistinctly signed bottom left, 30.5 x 46cm	£80-£120
67	H. Harris oil on canvas of English landscape titled Sheep Homeward Bound, signed bottom left, label to verso, 31 x 51.5cm	£80-£120
68	Nicolleto framed oil on panel of fishing boats on a beach on the Amalfi coast, signed bottom right, 47 x 66.5cm	£150-£200
69	Edward Rowarth framed oil on canvas of The Swartland South Africa, signed bottom right, 59.5 x 82cm	£120-£180
70	Roberto framed oil on panel of a Dutch landscape with figures on a frozen river, signed bottom right, 40 x 50cm	£100-£150
71	Miquel Pigne Casamajor (Steven) oil on panel titled Red Roof, details to verso, signed bottom left, 14 x 28cm	£30-£50

Porcelain

72	Wedgwood Apple Blossom dinner service to include plates, bowls, tureens and covers, serving dishes, cups, saucers and a pair of sauce boats (145)	£200-£300
73	Royal Albert Old Country Roses dinner, tea and coffee service to include plates, bowls, cups, saucers, serving dishes, a coffee pot, vases, sauce boat and stand, butter dish, platters and condiments (162)	£250-£350
74	Wedgwood Chartley dinner and tea service for twelve place settings to include plates, bowls, cups, saucers, teapot, sugar bowl, milk jug, serving dishes and covers and a sauce boat (93)	£300-£500
75	Wedgwood Amherst dinner and tea service for eight place settings to include plates, bowls, cups, saucers, a teapot, serving dishes and vegetable dishes (62)	£200-£300
76	Royal Albert Lavender Rose dinner service to include plates, bowls, serving dishes, platters, cups, saucers and sauce boat and stand (155)	£150-£200

Lot No.	Description	Estimate
77	Aynsley early 20th century teaset to include plates, cups, saucers, cake plates, milk jug and sugar bowl (37)	£70-£100
78	Royal Albert Old Country Roses part coffee set to include cups, saucers and plates (34)	£60-£90
79	Hollohoza porcelain coffee set for six place settings to include a coffee pot, cups, saucers, milk jug and sugar bowl	£50-£80
80	Hollohoza porcelain coffee set for six place settings to include a coffee pot, cups, saucers, milk jug and sugar bowl	£50-£80
81	A 19th century KPM Berlin trio with Royal Cypher and two Napoleonic style white and gilt porcelain cups with scroll handles (5)	£30-£50
82	A Meissen painted floral vase of tapering cylindrical form with gold borders, 14cm (h)	£30-£50
83	A Herend Fortuna orange Apponyi pattern ten piece hors d'oeuvres set with tray and matching spoons, marks to the bases, 37.5cm (d)	£200-£300
84	Herend porcelain triangular dish decorated with flowers and repeating border, 25 x 25.5cm	£50-£80
85	A quantity of Herend pieces to include two vases, a leaf shaped dish and a pin tray, tallest 17cm (h)	£60-£90
86	A Herend heart shaped dish and cover and a Herend vase decorated with birds and flowers, marks to the bases, tallest 14cm (h)	£50-£80
87	Carltons Fantasiaware Burslam shaped square bowl decorated with fairies, sprites and flowers 10 x 20 x 20cm and a matching smaller bowl, marks to the base, 7.5 x 13 x 13cm	£50-£80
88	Royal Worcester Fallen Fruit mug and a Royal Worcester cream jug, marks to the bases, tallest 13cm (h)	£60-£90
89	Royal Crown Derby Imari pattern to include a two handled covered bowl and an oval covered box, marks to the bases, tallest 11.5cm (h)	£60-£90
90	A pair of Royal Worcester Heritage Collection vases and covers with gilded side handles, the oval panels to the sides with feathers, signed D. Peplow mounted on rectangular bases, marks to the bases, 15.5cm (h)	£120-£180
91	A pair of Wedgwood black basalt spill vases decorated with gilded flowers and borders, 13cm (h)	£100-£150

Lot No.	Description	Estimate
92	Royal Doulton Art Deco Flamingo bowl and matching plate, marks to the base, bowl A/F, 24cm (d)	£80-£120
93	Doulton baluster vase with gilded mask side handles, blue ground with painted gilded scrolls, flowers and leaves on a square base, 28cm (h)	£80-£120
94	Two continental chargers decorated with flowers and leaves decorated in the oriental style, 38.5cm and 36cm	£70-£100
95	A large 19th century twin-handled ironstone soup tureen and cover, decorated in the Oriental style, marks and pattern number to base, 28 x 35 x 23cm	£60-£90
96	A quantity of 19th century Lustre Ware including a jug, coffee cans, saucers, bowls (14)	£100-£150
97	A quantity of studio pottery to include Alan Caiger-Smith Aldermaston pottery jugs and bowls decorated with geometric patterns (8)	£100-£150
98	Gerry Harvey Mead Pottery vase, signed to the base, 23cm (h)	£50-£80
99	A large continental neoclassical revival blue glazed ceramic wall plaque of circular form, high-relief cast with central battle scene and dragons and serpents to border, 56cm (d)	£100-£150
100	Jonathan Cox Studio pottery charger titled Marsh Meadows, signed to the base, 49cm (d)	£120-£180
101	Jonathan Cox Studio pottery bowl titled Marsh Meadows, signed to the base, 37.5cm (d)	£70-£100
102	Jonathan Cox Studio pottery bowl titled Summer Meadow, signed to the base, 35.5 (d)	£60-£90
103	Jonathan Cox Studio pottery bowl titled Hedgerow, signed to the base, 27cm (d)	£40-£60
104	Jonathan Cox Studio pottery baluster vase titled Summer Meadows, signed to the base, 38.5cm (h)	£70-£100
105	Jonathan Cox Studio pottery bulbous vase titled Marsh marigolds, signed to the base, 24cm (h)	£60-£90
106	Jonathan Cox Studio pottery baluster vase titled Corn Marigolds, signed to the base, 26.5cm (h)	£60-£90
107	Jonathan Cox Studio pottery baluster vase titled Vine, signed to the base, 26cm (h)	£60-£90
108	Three Jonathan Cox Studio pottery vases, signed to the bases, tallest 14.5cm (h)	£80-£120

Lot No.	Description	Estimate
109	A pair of Goldscheider porcelain Art Deco wall pockets in the form of female busts, marks to the bases, 18.5 x 13.5cm	£80-£120
110	A pair of Goldscheider Temple Dancer Art Deco figurines by Helen Liedloff 1954B, marks to the bases, 19.5cm (h)	£50-£80
111	Meissen porcelain group of the drunken Silenus supported by Bacchus and slumped on a donkey being fed grapes by a maiden relaxing on the ground, and a putti playing with its tail, marks to the base, 21 x 20 x 10cm	£300-£500
112	Dresden fifteen piece Monkey Band Orchestra each figurine wearing 18th century dress to include a conductor, horn players, violin players, some A/F, tallest 17.5cm (h)	£250-£350
113	A pair 19th century of Sitzendorf figures in the oriental style, 11.5cm (h) A/F	£60-£90
114	Christy Keeney ceramic bust of a lady, signed to the base, 32 x 19 x 9cm	£250-£350
115	A Crown Naples figurine of putti reclining on a half column mounted on a raised oval base, marks to verso, 25 x 30 x 14cm	£30-£50
116	A large bisque figurine of a lady and a pair of Majolica pastille burners in the form of birds nest and snakes, tallest 27.5cm (h)	£30-£50
117	Two Lladro figurines to include a Victorain Girl on a Swing 1297, 39cm (h) and a Seated Girl doing Embroidery 4865, 28cm (h) marks to the bases	£100-£150
118	Two Lladro figurines to include a scholar and girl with birds, marks to the bases, tallest 19cm (h)	£30-£50
119	Four Peggy Davis, Kevin Frances Art Deco style figurines, marks to the bases, tallest 23cm (h)	£80-£120
120	Two Doulton figurines of a lady and gentleman from Williamsburg, marks to the bases, tallest 15cm (h)	£30-£50
121	A pair of 19th century Staffordshire figurines of Louis Napoleon and Empress of France on horseback, 32 and 30cm (h)	£80-£120
122	A quantity of 19th century Staffordshire flat backs to include Victoria and Albert, the Shepherd with six dogs, tallest 23cm (h) (6)	£60-£90
123	A pair of 19th century Staffordshire seated flat back spaniels with red-painted decoration, 26cm (h)	£80-£120

Lot No.	Description Glass	Estimate
124	Lalique Basket Weave crystal glass vase, 24cm (h) in original box with paperwork	£200-£300
125	Lalique Roxane wine decanter with moulded drop stopper signed to base 32.5cm (h)	£80-£120
126	Lalique figurine of a seated nude lady, signed to the base, 9cm (h)	£100-£150
127	Lalique figurine of a Mermaid, signed to the base, 10cm (h)	£150-£200
128	Asprey cut glass decanter etched and incised body with hallmarked silver collar, 20cm (h)	£60-£90
129	A late Victorian oval two bottle Tantalus with silver plated hinged carrying handle on oval base, to include key, Reg No. 527634, 33 x 37 x 17cm	£200-£300
130	A Georgian Irish lead crystal vase and cover on shaped circular base with faceted finial to domed pull off cover, 38cm (h)	£60-£90
131	Anthony Stern glass vase with moulded side handles on raised circular base 32.5cm (h)	£30-£50
132	A Victorian amethyst glass rose bowl and two matching stem vases, tallest 27.5cm (h)	£80-£120
133	A Victorian pink glass lustre of customary form, 32cm (h)	£30-£50
134	Whitefriars smokey grey and clear glass knobbly vase designed by William Wilson and Harry Dyer, pattern number 9612, 26.5cm (h)	£60-£90
135	Whitefriars meadow green glass knobbly vase designed by William Wilson and Harry Dyer, pattern number 9608, 15.5cm (h)	£50-£80
136	Whitefriars blue knobbly bowl designed by William Wilson and Harry Dyer, pattern number 9614, 16.5cm (d)	£50-£80
137	A pair of Whitefriars orange bark finish vases by Geoffrey Baxter, 23.5cm (h)	£100-£150
138	A Whitefriars orange bark finish cylindrical vase by Geoffrey Baxter, 15.5cm (h)	£40-£60
139	A set of six Whitefriars teardrop vases, pattern number 9571, tallest 23.5cm	£80-£120
140	Whitefriars candle holder in original packaging and a Whitefriars yellow long stem vase, tallest 26cm (h)	£40-£60
141	An early 20th century milk glass baluster vase decorated with hand painted flowers and leaves, 46cm (h)	£50-£80

Lot No.	Description	Estimate
142	A cased set of six Art Deco overlaid silver shot glasses and a matching decanter with drop stopper	£30-£50
143	Six coloured hock glasses on raised circular bases	£60-£90
144	Fourteen glass scent bottles of various form, style, shape and date, tallest 20cm (h)	£100-£150
145	A quantity of studio glass to include Baccarat, a Guerlain scent bottle, and Rosenthal (6)	£50-£80
146	Two polychromatic Murano glass fish, 37cm and 14.5cm (l)	£30-£50
147	A studio glass abstract figurine, a Murano glass fish and two scent bottles, a porcelain trinket box and cloisonné panda bear, tallest 29.5cm (h) (6)	£40-£60

Oriental Porcelain & Collectables

148	A pair of Chinese Famille Rose covered vases of bowed rectangular form decorated with figures in a landscape, 34cm (h)	£30-£50
149	A pair of Royal Qing Dynasty style Famille Rose peony vases of globular form with elongated necks, 34cm (h)	£30-£50
150	A Chinese blue and white baluster vase decorated with figures in a landscape, 25cm (h)	£60-£90
151	An 18th century Chinese memorial dish with central Armorial, 16cm (d)	£30-£50
152	A Chinese cloisonné longevity dish decorated with bats and flowers to both sides, 20cm (d)	£60-£90
153	A pair of Japanese Imari pattern early 20th century baluster vases decorated with flowers, leaves and birds, 30cm (h)	£50-£80
154	Japanese Kutani ceramic vase with a flared rim decorated with figures, applied ring and drop tassels, character marks to the base and two smaller matching vases, tallest 42cm (h) (3)	£80-£120
155	A Chinese polychrome Yixing teapot of rectangular form with simulated bamboo handle and spout, marks to the base, 15 x 17 x 8.5cm	£60-£90
156	A Chinese Yixing terracotta teapot of compressed form decorated with flowers and Chinese characters, marks to the base, 7 x 12 x 7.5cm A/F	£30-£50

Lot No.	Description	Estimate
157	A quantity of Chinese and Japanese ceramics to include a large figural decorative bowl, ginger jar and cover hand-painted with storks, a plate, blue and white square plate with canted corners, smaller floral hand-painted bowl and a cup, various character marks to the bases (6)	£80-£120
158	A pair of Chinese turquoise glazed ceramic Dogs of Foe, each 15 x 22 x 9cm	£50-£80
159	Three jadeite figurines to include two ladies and a Bird of Paradise on three carved hardwood stands, tallest 24.5cm	£30-£50
160	Four 19th century Japanese carved novelty Netsukes, tallest 5.5cm (h)	£300-£500
161	A wooden Netsuke of a ram, signed to the base, 4 x 5 x 3.5cm	£40-£60
162	A Japanese carved wood three case inro, carved with male and female figures in erotic positions (shunga) and a carved wood netsuke of a woman, 8 x 6cm	£30-£50
163	A Japanese Okimono bronze of a tiger, 6 x 14 x 3.5cm	£70-£100
164	A Japanese Okimono bronze figurine of a sleeping bulldog, 2.5 x 9 x 5cm	£30-£50
165	A carved wooden Chinese figurine of a man and a temple dog on carved naturalistic base, 35.5cm (h)	£30-£50
166	A pair of Chinese miniature bronze baluster vases with elephant mask side handles, 11.5cm (h)	£60-£90
167	An oriental rectangular wooden jewellery casket with brass fittings and carved jadeite inlay panels, 18 x 14.5 x 11cm	£40-£60
168	A Chinese octagonal lacquered picnic basket decorated with panels of leaves and flowers, circa 1900, 42 x 34 x 30cm	£100-£150
169	An oriental rectangular hardwood chest with original brass fittings and padlock on four bracket feet, 16.5 x 32.5 x 21cm	£50-£80

Collectables

170	A brass umbrella and stick stand in the form of a male figure on shaped oval base with scroll supports, 58 x 36cm	£40-£60
171	A Victorian cast iron painted doorstep in the form of Punch 31cm (h)	£30-£50
172	A Victorian cast iron bronzed doorstep in the form of Judy with The Baby, 27cm (h)	£30-£50

Lot No.	Description	Estimate
173	A Victorian cast iron painted doorstop in the form of a Rampant Lion on raised rectangular base 39cm (h)	£30-£50
174	Adolphe Jean Lavergne bronze figurine titled Le Pecheur, signed to the base, 47cm (h)	£200-£300
175	A continental bronze figurine of two gambolling putti on raised oval base indistinctly signed to the front, 28cm (h)	£40-£60
176	A Victorian spelter figural group of figures and a dog on raised naturalistic base, 24 x 29 x 12cm	£30-£50
177	A pair of late 19th century spelter figurines of putti on raised oval wooden bases, 22 x 18 x 13cm	£30-£50
178	A bronze figurine of Napoleon on square onyx base, 17cm (h)	£40-£60
179	A pair of 19th century gilded bronze candlesticks modelled as knights of the realm on raised openwork square bases, 28.5cm (h)	£100-£150
180	A pair of gilt, metal and porcelain candlesticks in the Sevres style, 19.5cm (h)	£40-£60
181	A pair of gilded metal table candlesticks in 19th century style, 15.5cm (h)	£30-£50
182	A 1920s Bergman style cigar lamp in the form of a cold painted bronze of an Arab rug seller mounted on a rectangular black onyx plinth, 19 x 16 x 8.5cm	£180-£280
183	A 1920s Bergman style cigar lamp cold painted bronze of a praying Arab gentleman by a well, mounted on a rectangular marble plinth, 10.5 x 12.5 x 7.5cm	£180-£280
184	Dunhill 70 gold plated cigarette lighter	£30-£50
185	A French brass Signs of the Zodiac and calendar wall plaque 9.5 x 30.5cm and a brass celestial armillary Globe 24cm (h)	£80-£120
186	Victorian brass desk thermometer of circular form, Celsius and Fahrenheit scales, 13 x 10cm	£40-£60
187	E. Thomas and Williams Ltd of Aberdare Wales, miners safety lamp of customary form, no. 67848, 33.5cm (h)	£40-£60
188	Amp and Limelight Company Hockley miners safety lamp of customary form, 31.5cm (h)	£30-£50
189	A Turkish slat pierced globular copper and brass bird cage on four turned supports, 52 x 38cm	£80-£120
190	A Turkish copper and brass samovar of customary form with brass spigot on raised circular base, 63 x 40cm	£100-£150

Lot No.	Description	Estimate
191	A copper hand hammered tea kettle on a brass stand to include a matching spirit burner, 35 x 18.5 x 20cm	£60-£90
192	A continental ebonised and gilt metal table centre piece with rams head masks, the central glass detachable vase of tapering conical form all on a shaped triangular marble base, 39 x 27cm	£150-£200
193	A pair of antique French brass wrought iron and brass ladles, 52cm (l)	£40-£60
194	A Victorian cast iron book press with central screw thread, 36 x 41 x 26cm	£80-£120
195	Alitalia Airlines metal scale model of a DC8 aeroplane to include stand, 53 x 93 x 88cm	£30-£50
196	Three military helmets to include French WWI, Dutch Resistance circa 1930, and a German WWII to include documentation	£250-£350
197	Victorian South Africa medal with five bars to include Cape Colony, Orange Free State, Transvaal, South Africa 1901 and South Africa 1902 attributed to 1385 TPR. H. F. HUBBARD S.A.C. and a George V WWI medal attributed to LIEUT. H. F. HUBBARD	£150-£200
198	A pair of Carl Zeiss 10x50 binoculars in original fitted leather case	£40-£60
199	A late 19th century four draw leather bound brass telescope	£30-£50
200	A quantity of vintage cameras to include Zeiss, Ikon, Balda, Zenith, Voigtlander (6)	£100-£150
201	A vintage Zeiss Ikon Ikonta camera in original leather case (case A/F)	£30-£50
202	A quantity of photographic equipment to include Praktica, Kodak and Ilford cameras, lenses and accessories	£60-£90
203	A quantity of writing instruments to include a Parker fountain pen with 14ct gold nib, a Cross silver ballpoint pen and a gold plated propelling pencil, all in fitted cases	£40-£60
204	An early 19th century white marble and ormolu Tazza from the Gianni Versace collection, previously sold at Sotheby's 2009 28.5 x 21 x 17cm	£300-£500
205	A shaped square marble dressing table box, the pull off cover with a gilt metal dragon finial, 6 x 6.5 x 6.5cm	£30-£50
206	A quantity of collectables to include Lapis Lazuli figurines, pin dishes, patch boxes and a treen box (23)	£100-£150

Lot No.	Description	Estimate
207	An Olivewood veneered, cross-banded and inlaid tapered stationery box, the rising top with Star of David inlay and inscribed Jerusalem, enclosing a fitted interior, 24 x 33 x 34cm	£100-£150
208	A Victorian mahogany rectangular travel vanity set with hinged cover opening to reveal fitted interior, 17.5x 30.5 x 23cm	£70-£100
209	A rectangular wooden sewing box with domed banded hinged cover on four bun feet, 13 x 28.5 x 16.5cm	£30-£50
210	An Art Nouveau hand painted rectangular stationery box with hinged cover circa 1880, 12.5 x 28.5 x 21.5cm	£30-£50
211	A Victorian trinket box, shaped rectangular, carved with leaves, flowers and stylised figures to the corners, the hinged cover with carved floral finial, 14.5 x 24 x 15cm	£30-£50
212	A Middle Eastern rectangular box inlaid with Mother of Pearl, 6.5 x 30 x 20cm	£30-£50
213	A mid 20th century rectangular oak table top filing drawer by Shaw Walker (USA), 16 x 21 x 39cm	£40-£60
214	Victorian ebonised oval papier mache oval tray, the centre decorated with hand-painted flowers, the underside stamped CLAY, 71 x 57cm	£80-£120
215	A large Victorian shaped rectangular ebonised papier mache tray, shaped rim, the centre decorated with hand-painted flowers and raised rim with flowers and gilt spray	£80-£120
216	Three 20th century leather document holders with carrying handles	£60-£90
217	A quantity of 1980s British Airways Concorde memorabilia and ephemera to include menus, signed flight certificate, luggage label and document wallets	£60-£90
218	A quantity of antique and vintage black and white and polychromatic postcards	£30-£50
219	A Victorian leather bound photograph album with original photographs	£40-£60
220	A quantity of J.K Rowling books to include first edition Harry Potter volumes and other books (12)	£100-£150
221	Oak bookcase with fourteen Charles Dickens leather bound volumes, circa 1900, 88 x 31 x 15cm	£50-£80

Lot No.	Description	Estimate
222	A hardwood African tribal club 52cm (l) a war axe with steel head 66cm (l) and a paddle shaped club carved with crocodiles with Mother of Pearl eyes, possibly Polynesian 101cm (l)	£80-£120
223	Two religious Icons one with white metal mounts, 20.5 x 14.5 cm and 28.5 x 13cm	£30-£50
224	A quantity of Judaica including a boxed scroll and mezuzah, paperweight ceramics and metal ware (11)	£50-£80
225	A quantity of Roman ceramic and terracotta antiquities (4)	£60-£90
226	A mid 20th century Bakelite day, date and month desk calendar, 4.5 x 11 x 6cm	£30-£50
227	Van Cleef and Arpels Art Deco style ladies handbag mirror, yellow and white metal to include a cloth cover, 7 x 8cm	£30-£50
228	Violin in fitted case with Rosetti label to interior	£30-£50
229	Violin in fitted case by Boosey and Hawkes, to include a bow	£30-£50

Coins & Bank Notes

230	Queen Elizabeth II 2006 Eightieth Birthday silver proof coin collection, sixteen crown size coins in plush fitted wooden case limited edition 928/15000, to include COAs, approx total weight of silver 452g	£400-£600
231	2008 United Kingdom coinage Emblems of Britain silver proof collection, seven coin set in plush fitted case, to include COA	£40-£60
232	A quantity of proof silver £1 coins to include 1984-1987 three coin set in fitted case, 2004 four coin set in fitted case and 1988 coin in fitted case, all with COAs	£30-£50
233	Four GB crown size silver coins all in fitted cases three with COAs	£50-£80
234	Seven GB £2 silver proof coins in original fitted packaging to include COAs,	£50-£80
235	Ten United Kingdom Coin Sets to include 1967, 1970, 1987, 1989, 2006, 2009, 2011, 2012, 2013 and Royal Shields of Arms Brilliant Uncirculated coin collection	£80-£120
236	Eight Royal Mint United Kingdom Proof Coin Sets to include 2012, 2013, 2014, 2015, 2016, 2017, 2018 and 2019	£120-£180
237	Eight 10 Shilling bank notes to include Fforde, O'Brein and Hollom	£50-£80

Lot No.	Description	Estimate
Alcohol & Cigars		
238	Krug 1976 vintage Brut champagne 75cl	£400-£600
239	Krug 1976 vintage Brut champagne 75cl	£400-£600
240	Krug Grande Cuvee Brut champagne 75cl in original fitted case	£60-£90
241	Bollinger La Grande Annee 2002 vintage Brut champagne 75cl in original fitted case	£70-£100
242	Bollinger La Grande Annee 2002 vintage Brut champagne 75cl in original fitted case	£70-£100
243	Bollinger La Grande Annee 1999 vintage Brut champagne 75cl	£80-£120
244	Bollinger Extra 1976 vintage Brut champagne, 75cl	£100-£150
245	Dom Perignon 1993 vintage Brut champagne 75cl in original fitted case	£150-£200
246	Dom Perignon 1996 vintage Brut champagne 75cl in original fitted case	£120-£180
247	Dom Perignon 2003 vintage Brut champagne 75cl in original fitted case	£70-£100
248	Dom Perignon 2006 vintage Brut champagne 75cl in original fitted case	£60-£90
249	Moet & Chandon Brut Imperial champagne Jeroboam (3000ml)	£120-£180



Lot 252

Lot No.	Description	Estimate
250	Four bottles of NV champagne to include Moet & Chandon Brut Imperial 2 x 75cl, Fortnum & Mason Brut rose 75cl and Fortnum & Mason Blanc de Blancs Grand Cru 75cl	£80-£120
251	1959 Domaine de la Romanee-Conti (no. 3105 of 9627)	£1000-£1500
252	2001 Chateau Batailley Pauillac Grand Cru Classe a case of twelve 75cl bottles	£250-£350
253	1995 Grand Vin de Leoville du Marquis de Las Cases Saint-Julien and Chateau L'Arrose Grand Cru Classe Saint-Emilion Grand Cru	£100-£150
254	Three bottles of vintage French red wine to include 1973 Chateau Liversan Haut-Medoc, 1975 Chateau Ducru-Beaucaillou Saint-Julien and 1978 Domaine de Chevalier Grand Cru Classe Graves	£150-£200
255	1976 Chateau Mouton Baronne Philippe de Rothschild Pauillac, 1978 Chateau Mouton Rothschild Pauillac (level 180mm from bottom), 1959 Chateau Lafite Rothschild Pauillac (level 95mm from bottom), 1961 Chateau Lafite Rothschild Pauillac (level 140mm from bottom) (4)	£250-£350
256	A quantity of vintage French red wine to include 1986 Domaine Henri Gouges Nuits-St-George, 1988 Chateau Reysson Haut Medoc, 1996 Sarget Du Chateau Gruard-Larose Saint-Julien two bottles, 2002 Chateau de Pitray Premier Vin, Cotes de Castillon two bottles (6)	£80-£120
257	A quantity of vintage French red wine to include 1964 Chateau Clos Du Marquis Saint-Julien, 1970 Beaune Clos Du Roi Chanson, 1971 Chateau Barbey Dolamore, 1974 Marcel Armance Chassagne 1er Cru Margaux, 1982 Chateau Patache d'Aux Medoc and 1983 La Reserev Du General Margaux (6)	£80-£120
258	Faberge Arts Applied Craft Imperial Collection vodka in original presentation box, the presentation box contains a malachite Faberge imitation egg decorated with crystal and gold coloured mounts, surmounted with a gold eagle. Inside the egg is a presentation decanter and four shot glasses with gold and enamel decoration	£400-£600
259	House of Lords 10 year old single malt whisky by Chivas Brothers in original packaging	£30-£50
260	Green Chartreuse 96 proof 1970s bottling, 24 fl. oz bottle	£80-£120

Lot No.	Description	Estimate
261	San Gil J and J Pallas Domaine de Cassanel VSOP Grand vintage Armagnac 70 proof three litre bottle	£200-£300
262	Vieil Armagnac Henri Paget et ses Enfants Chateau de Cassaigne 42 proof, 1962, 70cl bottle	£100-£150
263	Five bottles of vintage Courvoisier Luxe cognac 680ml bottles	£80-£120
264	Romeo Y Julieta a sealed box of 25 Romeo No.3 tubed cigars	£350-£550

Clocks & Watches

265	A French 19th century skeleton clock with silvered chapter ring, Roman numerals, mounted on a white marble plinth to include glass dome, key and pendulum, 55 x 33 x 21cm	£300-£500
266	A French gilded metal figural mantle clock with white enamel dial Roman numerals, to include key and pendulum, 47 x 42.5 x 20cm	£50-£80
267	A French 19th century red marble and spelter mantle clock surmounted by a figure of cupid the triform base on three scroll legs, two train movement, white enamel dial with gilded chapter ring and Arabic numerals, to include key and pendulum, 55 x 30 x 14cm	£100-£150
268	A late 19th century French rectangular Carrara marble cased mantle clock, engraved dial, two train drum movement striking on a bell surmounted by two gilt bronze musical putti, all on a raised plinth, to include pendulum and key, 35.5cm (h)	£100-£150
269	Henry Marc of Paris 19th century black slate mantle clock of cylindrical on scroll supports and rectangular moulded plinth, two train movement, white enamel dial with Roman numerals, to include key and pendulum, 26 x 40.5 x 14cm	£100-£150
270	A Victorian oak cased mantle clock with brass and white enamel chapter ring and Arabic numerals, two train movement, to include pendulum and key, 47 x 28 x 16cm	£60-£90
271	An Edwardian mahogany mantle clock with satinwood inlay, white enamel dial, Roman numerals, two train movement, lion mask side handles all on four ball feet, to include key and pendulum, 25.5 x 19 x 12cm	£60-£90

Lot No.	Description	Estimate
272	An Edwardian arched top mantle clock with white enamel dial, Arabic numerals, two train movement, to include pendulum, 35.5 x 22.5 x 14.5cm	£50-£80
273	A West End Watch Co. mantle clock, white enamel dial with Arabic numerals in rectangular white metal case, 14.5 x 10 x 13.5cm	£60-£90
274	Mappin and Webb carriage clock of customary form, white enamel dial and Roman numerals and handle, 15.5cm (h)	£60-£90
275	Swiza desk clock, thermometer and barometer with carrying handle on shaped oval base, 10 x 15 x 3.5cm	£40-£60
276	An engine turned silver Easter Egg desk clock with silver gilt mounts on integrated stand and pearl finial, London 1983, 8.5cm (h)	£300-£500
277	J W Benson 9ct gold half hunter pocket watch with white enamel dial, Arabic numerals, subsidiary seconds dial, to include original case, approx total weight 92.3g	£800-£1200
278	Omega open face pocket watch with white enamel dial, Roman numerals and subsidiary seconds dial	£60-£90
279	J W Benson hallmarked silver open face pocket watch with white enamel dial, Roman numerals and subsidiary seconds dial, to include original case	£60-£90



Lot 276

Lot No.	Description	Estimate
280	A hallmarked silver half hunter pocket watch with white enamel dial, Roman numerals, subsidiary seconds dial and a hallmarked silver Albert chain with fob and coin pendant	£70-£100
281	J W Benson hallmarked silver open face pocket watch with white enamel dial, Roman numerals and subsidiary seconds dial, to include hallmarked silver watch stand	£70-£100
282	A hallmarked silver pair cased pocket watch with white enamel dial, Roman numerals and subsidiary seconds dial, to include a key	£60-£90
283	Three open face pocket watches to include Nathan and Co. D.F and Co. and Satisfaction	£80-£120
284	Chronometre Mitzpa white metal pocket watch with white enamel dial, Arabic numerals and subsidiary seconds dial, stamped 800, circa 1920	£40-£60
285	An Omega Genève gentlemans 9ct gold wristwatch on a replacement leather strap circa 1960, to include original box and documents	£220-£320
286	Jaeger LeCoultre 9ct yellow gold cocktail wristwatch set with diamonds and rubies, approx total weight 34g, to include original case	£800-£1200
287	Bulova Art Deco tank watch with expanding bracelet inset with month calendar	£40-£60
288	Four gentlemens fashion wristwatches to include Raymond Weil, Rotary, Citizen and Rosra	£100-£150

Jewellery

289	A quantity of silver and costume jewellery to include necklaces, wristwatches, cufflinks, rings, earrings and brooches	£100-£150
290	A quantity of costume and silver jewellery to include earrings, bangles, bracelets, pendants, a pair cased pocket watch and two hallmarked silver napkin rings	£100-£150
291	A quantity of costume jewellery to include cufflinks, necklaces, pendants and brooches	£50-£80
292	A quantity of silver and costume jewellery to include a jade necklace and bracelet	£100-£150
293	A quantity of silver jewellery to include chains, pendants and lockets	£40-£60

Lot No.	Description	Estimate
294	A quantity of silver and costume jewellery to include identity bracelets, a charm bracelet, bangles, necklaces, rings and earrings	£150-£200
295	A quantity of costume jewellery to include a bracelet, necklaces and a brooch	£40-£60
296	A quantity of costume jewellery to include necklaces and pendants	£40-£60
297	A quantity of hallmarked silver and white metal to include a vesta case, Albert chains and three medals	£100-£150
298	Coral bead necklace with pink and white beads, 102cm (l)	£100-£150
299	A continuous strand of cultured pearls, 134cm (l) to include Goldsmiths insurance valuation	£200-£300
300	Platinum diamond solitaire engagement ring to include GIA certificate and a matching wedding band, diamond 1.14 carat, colour J, clarity VVS2, approx total weight 14.4g	£1500-£2000
301	18ct white gold and diamond ring, approx total weight 2.2g	£280-£380
302	18ct gold and diamond three stone dress ring, approx total weight 2.1g	£150-£200
303	18ct gold and diamond three stone dress ring, approx total weight 2.1g	£150-£200
304	18ct gold five stone diamond ring, approx total weight 2.4g	£150-£200
305	18ct gold and platinum illusion set three stone diamond ring, approx total weight 3.6g	£180-£280
306	18ct yellow gold diamond and emerald seven stone dress ring, approx total weight 3.7g	£220-£320
307	18ct gold, sapphire and diamond three stone ring, approx total weight 2.6g	£100-£150
308	9ct gold and diamond cocktail ring, approx total weight 2.6g	£100-£150
309	18ct yellow gold and garnet solitaire ring, approx total weight 8.1g	£250-£350
310	A 9ct gold and garnet dress ring, approx total weight 4.2g	£80-£120
311	9ct yellow gold and garnet dress ring, approx total weight 4.6g	£70-£100
312	Yellow gold and green glass faceted stone ring, tested 14ct, approx total weight 6.9g	£180-£280
313	9ct yellow gold and coloured stone ring, approx total weight 4.9g	£100-£150
314	9ct yellow gold ring, approx total weight 3.1g	£60-£90

Lot No.	Description	Estimate
315	22ct gold wedding band, approx total weight 6.4g	£320-£520
316	Two 22ct gold wedding bands, approx total weight 5.1g	£280-£380
317	9ct gold wedding band, approx total weight 3.6g	£80-£120
318	A yellow gold wedding band, approx total weight 3.1g (gold tested 9ct)	£60-£90
319	Two 9ct gold rings set with white stones and a 9ct gold and onyx signet ring, approx total weight 10.9g, all A/F	£180-£280
320	A quantity of 9ct gold to include a wedding band, a signet ring and a crucifix, approx total weight 4.9g	£100-£150
321	A pair of 18ct white gold and diamond solitaire earrings, approx total weight 3.3g	£300-£500
322	A pair of Mappin and Webb 18ct gold and pearl earrings in fitted case	£250-£350
323	A pair of Garrard 18ct yellow gold shell shaped earrings n original fitted case, approx total weight 12.6g	£500-£800
324	An 18ct yellow gold, diamond, ruby and semi precious pendant on a gold chain, approx total weight 26.7g	£400-£600
325	18ct white gold and diamond necklace, approx total weight 8.3g	£480-£680
326	9ct yellow gold and coloured stone bangle, in original fitted case, some stones missing, approx total weight 7.4g	£150-£200
327	9ct yellow gold Edwardian floral brooch set with seed pearls, approx total weight 4.1g	£60-£90
328	A pair of 9ct gold engine turned cufflinks in original fitted packaging approx total weight 5.2g	£100-£150
329	18ct yellow gold pendant on an 18ct yellow gold chain, approx total weight 9.9g	£400-£600
330	9ct gold rope twist chain, approx total weight 7g	£150-£200
331	A 9ct gold fancy oval link bracelet, approx total weight 11.3g	£220-£320
332	9ct gold fancy link bracelet, approx total weight 5.4g	£100-£150
333	9ct gold and white stone fancy link bracelet, approx total weight 9.3g	£150-£200
334	9ct gold fancy link bracelet, approx total weight 11.1g	£200-£300
335	Six 20 Mark Deutsche Kaiser gold coins set in a bracelet to include 1872 Karl, 1883 Wilhelm, 1884 Wilhelm, 1890 Wilhelm II, 1895 Wilhelm II, and 1906 Wilhelm II, approx total weight 54.3g	£2500-£3500

Lot No.	Description	Estimate
336	A Ludwig II Deutsche 5 Mark gold coin set in a pin brooch, approx total weight 3.3g	£150-£200
337	1997 QEII Bailiwick of Guernsey £5 gold coin in fitted plastic capsule, gold .999, approx weight of gold 1.24g	£70-£100
338	9ct yellow gold pendant, approx total weight 7.6g	£150-£200

Silver & Silver Plate

339	A hallmarked silver punch bowl chased with scrolls, flowers and leaves with gilt wash interior, on raised circular base, Birmingham 1906, approx total weight 1138g	£600-£900
340	A hallmarked silver punch bowl with scalloped rim on raised circular base, Chester 1908, approx total weight 957g	£500-£800
341	A hallmarked silver punch bowl with moulded rim on raised circular base and with applied medallion to the side, London 1910, approx total weight 1040g	£500-£800
342	A pair of hallmarked silver Corinthian column table candlesticks with stepped square beaded bases, London 1925, approx total weight 872g, 31cm (h)	£400-£600
343	A pair of hallmarked silver hand hammered table candlesticks tapering cylindrical stems on raised circular bases, Birmingham 1906, 20.5cm (h)	£200-£300
344	A pair of Georgian style hallmarked silver table candlesticks of cylindrical knopped stems on raised circular filled bases, Birmingham 1975, 19.5cm (h)	£120-£180
345	Hallmarked silver sauce boat oval with reeded border and loop handle on raised oval base, London 1929 approx total weight 355g	£180-£280
346	Hallmarked silver water jug, pear shaped with leaf capped double scroll handle on raised circular base, London 1938, approx total weight 416g	£200-£300
347	Mappin and Webb hallmarked silver sugar sifter tapering cylindrical, chased with bands of leaf and rosettes on raised circular base, London 1963, approx total weight 237g	£120-£180
348	A white metal fruit bowl, pierced and chased with urns, swags and leaves, the central base chased with putti and a goat, 24cm (d) A/F	£140-£200

Lot No.	Description	Estimate
349	A white metal chalice of cylindrical form with chased leaf band on raised circular base, 14cm (h)	£70-£100
350	A white metal Kiddush cup embossed with grapes and vines, and a hallmarked silver smaller Kiddush cup	£60-£90
351	A set of six continental white metal tea glass holders with angled handles and fruit chased borders and original tea glasses. stamped 800	£200-£300
352	A white metal three piece dressing table set to include a hand mirror and two clothes brushes	£80-£120
353	Hallmarked silver tea strainer and stand of circular form, the pierced strainer with two side handles and stand, Birmingham 1958, approx total weight 83g	£40-£60
354	Hallmarked silver toast rack of customary form engraved RHA on four ball feet, London 1900, approx total weight 68g	£30-£50
355	Hallmarked silver pierced circular bonbon dish on raised circular base, London 1904, approx total weight 107g	£50-£80
356	A cased set of six hallmarked silver napkin rings, London 1973, approx total weight of silver 50g	£30-£50
357	Two cased sets of hallmarked silver coffee spoons, approx total weight 139g	£60-£90
358	A quantity of hallmarked silver to include a cream jug, a silver and enamel compact, a cased spoon and a cased set of sugar servers, approx total weight 278g	£120-£180
359	A cased set of hallmarked silver coffee spoons with Apostle terminals, London 1911, approx total weight 65g	£40-£60
360	A hallmarked silver five piece condiment set to include blue glass liners, London 1973 and 1974, approx total weight 222g	£100-£150
361	A cased hallmarked silver condiment set, Birmingham 2000, approx total weight 113g	£50-£80
362	A pair of hallmarked silver dwarf candlesticks, Birmingham 1952, 7cm (h)	£30-£50
363	A set of six Kings pattern dessert eaters with hallmarked silver handles	£40-£60
364	Two hallmarked silver photograph frames in original packaging (as new), 15 x 15cm	£120-£180
365	A Victorian Scottish hallmarked silver and horn snuff Mull and a hallmarked silver and Mother of Pearl fruit knife	£200-£300

Lot No.	Description	Estimate
366	A Victorian hallmarked silver vinaigrette the hinged cover revealing gilt interior and grille, Birmingham 1874 by Nathaniel Mills	£80-£120
367	A Victorian hallmarked silver engine turned card case with hinged cover, Birmingham 1850 by Nathaniel Mills	£80-£120
368	Two hallmarked silver engine turned card cases with hinged covers, approx total weight 90g	£60-£90
369	Three hallmarked silver engine turned matchbox cases	£100-£150
370	Four hallmarked silver vesta cases of various form and size	£100-£150
371	Three hallmarked silver vesta cases of various form and size	£80-£120
372	A quantity of hallmarked silver and white metal to include four pill boxes of various form and size, a stamp holder and a thimble (6)	£60-£90
373	Hallmarked silver engine turned cigarette case, approx total weight 90g	£40-£60
374	A quantity of hallmarked silver and white metal to include a George IV vinaigrette Birmingham 1827 by Thomas Shaw, an enamelled scent bottle, a filigree vinaigrette, a model of a mouse and a charm (5)	£70-£100
375	A hallmarked silver engine turned watch stand and a white metal ladies card case	£70-£100
376	A quantity of white metal bonbon dishes and a pill box (10)	£120-£180
377	A quantity of hallmarked silver to include two salts, an ashtray and a glass dressing table bottle with silver cover (4)	£50-£80
378	Twenty one cut glass dressing table jars with hallmarked silver covers, approx weight of silver 180g	£100-£150
379	Mappin and Webb hallmarked silver and cut glass sugar shaker, two white metal bonbon dishes and a cased set of Mappin and Webb silver plated fish eaters for twelve place settings	£60-£90
380	Canteen of silver plated flatware for six place settings and two hallmarked silver napkin rings	£80-£120
381	Canteen of Kings pattern silver plated flatware for twelve place settings, 77 x 73 x 45cm	£120-£180
382	A quantity of Kings pattern silver plated flatware for twelve place settings	£70-£100
383	Victorian silver plated table centre candelabrum, the shaped square plinth rising to a knopped stem cast with fruiting vine and with detachable scroll pierced arms, 54.5cm (h)	£200-£300

Lot No.	Description	Estimate
384	Victorian silver plated and glass presentation centrepiece, tripod scroll supports, inscription to base for Royal Agricultural Society Champion Prize Isle of Wight dated 1886, 38cm (h)	£100-£150
385	A silver plated wine bottle and champagne cooler in the form of a stag head and antlers supporting a bowl, 52 x 38cm	£60-£90
386	Silver plated soup tureen and cover and an entrée dish and cover	£30-£50
387	A quantity of silver plate to include a four piece teaset, a tray, an entrée dish and cover and two fruit bowls	£40-£60
388	A quantity of silver plate to include a punch bowl and six cups, two gallery trays and an entrée dish and cover	£70-£100
E & O E		

We are pleased to offer online bidding via
www.easyliveauction.com and www.the-saleroom.com
 The live auction will allow you watch the sale as it happens
 in real time and listen to the auctioneer via a live audio feed.

To view the catalogue and register for the sale please logon to
www.the-saleroom.com/busheyauctions
 or www.easyliveauction.com/busheyauctions
 Please note our online bidding terms and conditions

In addition to this service we offer
 absentee/commission and telephone bids
 Please contact Richard or Linda for further information
 020 8386 2552 or 07504 201202



the-saleroom.com

Valuation Days

Friday 19th and 26th September
9am to 5pm at our Watford showroom
Unit 9 Shakespeare Industrial Estate
Watford
WD24 5RR

**Please call or email to book an appointment
or a home visit on any other day
NOW ACCEPTING ENTRIES**

tel: 020 8386 2552
mobile: 07504 201202
e-mail: enquiries@busheyauctions.com

Next Auction Dates

Online live auction 30th October

Online live auction 11th December

**Please check the website for confirmation
and viewing times
www.busheyauctions.com**



Lot 339

BUSHEY Auctions

tel: 0208 386 2552

mobile: 07504 201202

email: enquiries@busheyauctions.com

visit our website

www.busheyauctions.com